

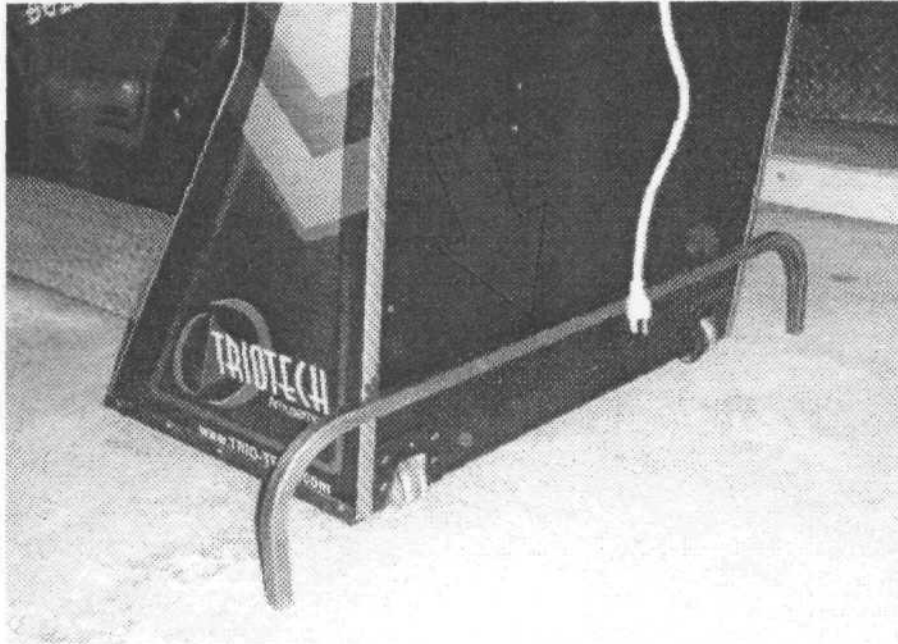


190 Des Industries
Lavaltrie, Quebec,
Canada, J0K 1H0
Tel: 450-586-5009
Fax: 450-586-0299

Ballistics Instructions



When installing only one machine you must install the lower stabilizing bar with the screws provided.



When 2 machines are together install the upper stabilizing bar provided (If you don't have the stabilizing bar ask your distributor for one)



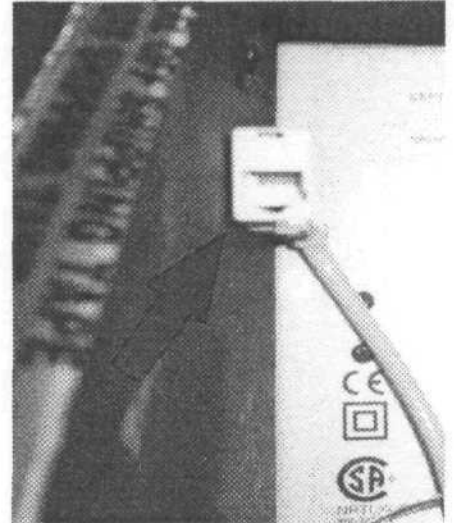
NETWORK CONNECTIONS

How to connect 2 or more machines together



How to connect 2 machines together

Connect the cross wired network cable between the two computers
(This wire is different from a standard network cable, you can notice that one end is labeled as cross wired)



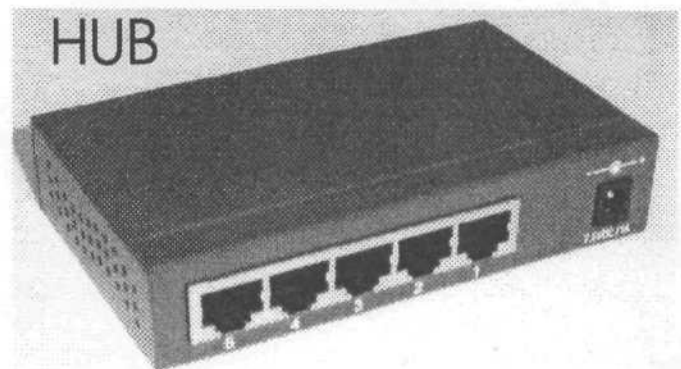
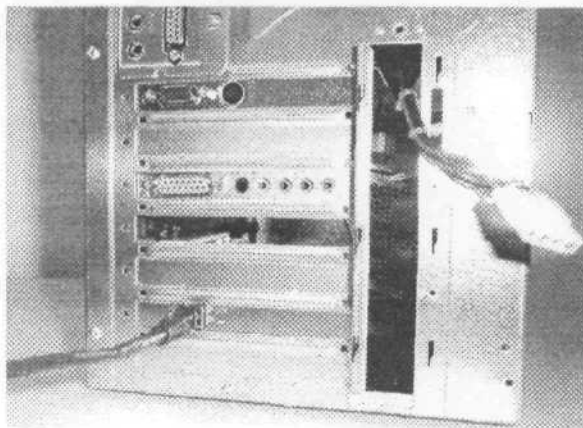
Connect wire between the two computer

How to connect more than two machines together

Place the hub in any machine.

Connect a network cable from each computers to the Hub.

(make sure you are not using a cross wired cable see picture above)



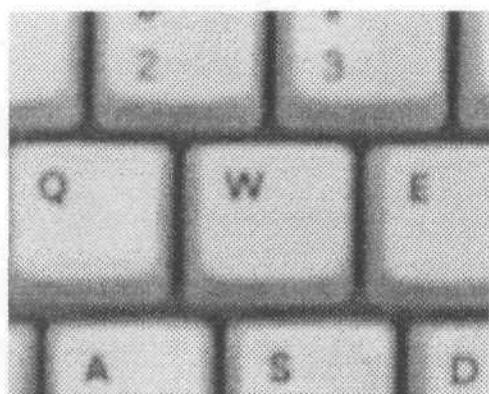
2

(Some Hub have an unlink connection)

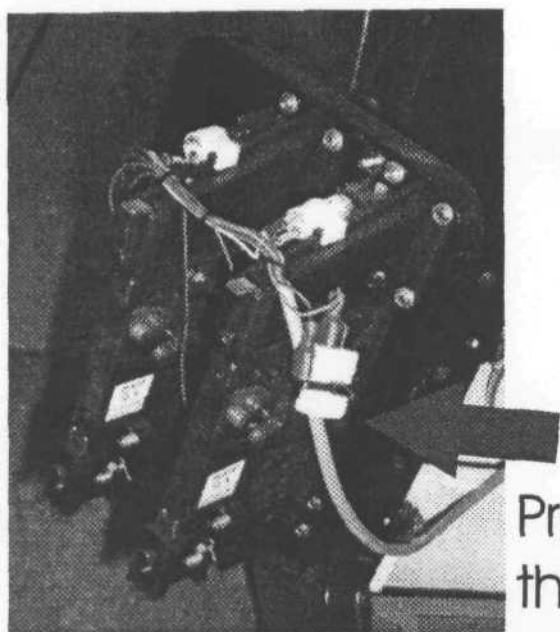
**HOW TO QUIT THE GAME TO ACCESS
WINDOWS 2000**



**Press the Letter W to quit the game
and go back to Windows.
To get back to the game just restart the computer.**

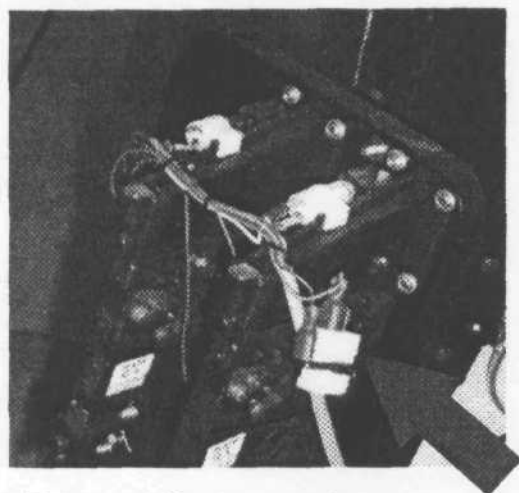


HOW TO READ THE COIN METER



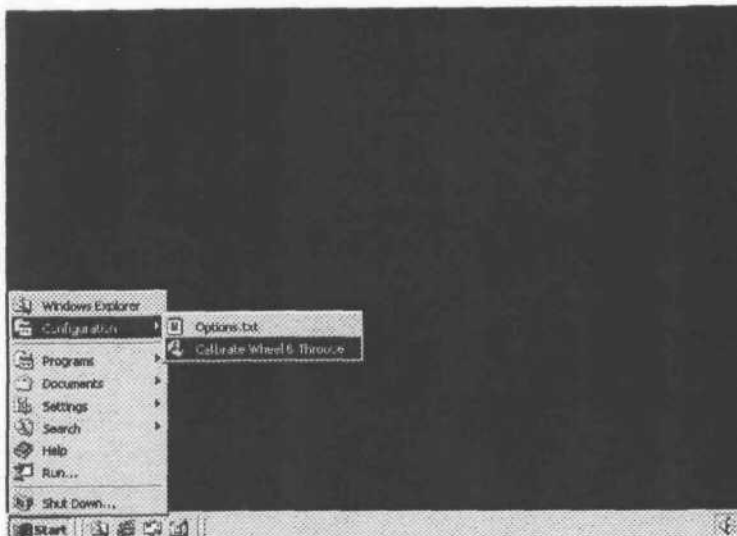
Press the coin meter button to view the coin meter (inside the coin door)

How to set the amount of credit



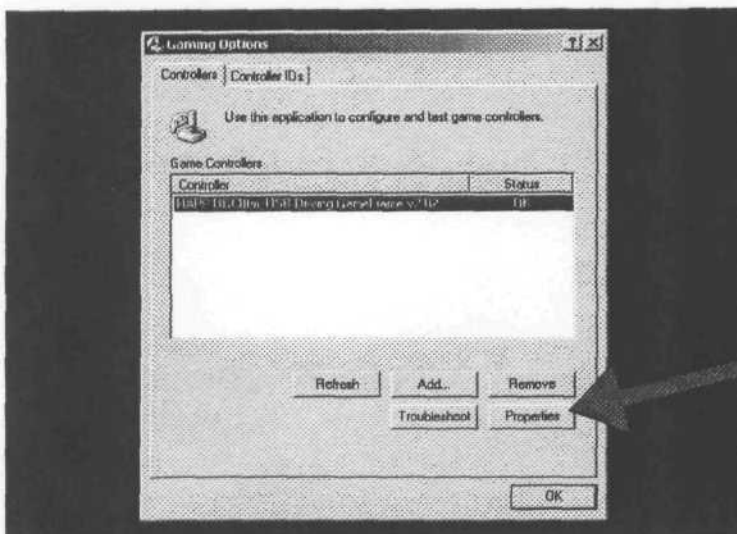
Press the coin meter button (inside the coin door),
Press the booster button to set to the desired credit needed to start the game (1 to 10 coins),
To set to free play (toggle until "press any buttons to play" is displayed at the bottom of the screen (just one selection after 10 credits)

CALIBRATING THE CONTROLS



Press :

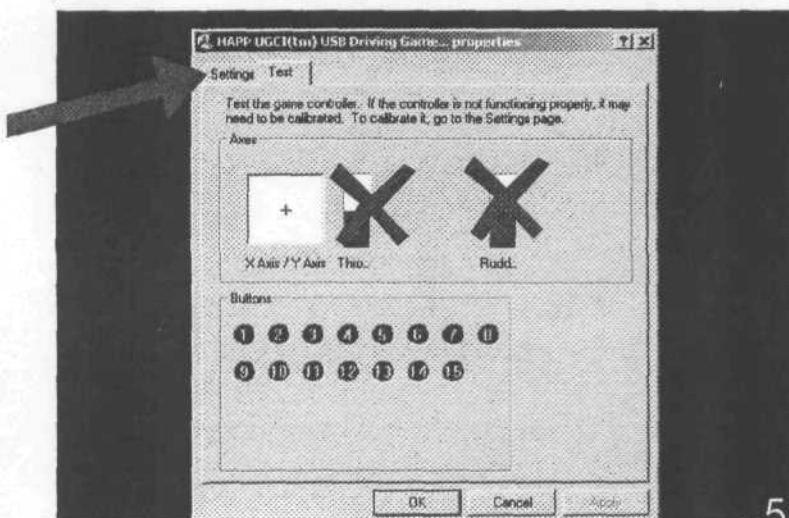
Start,
Configuration,
Calibrate wheel & throttle



Click:

Properties

Please note that the steering wheel is on the X axis and the throttle is on the Y axis.

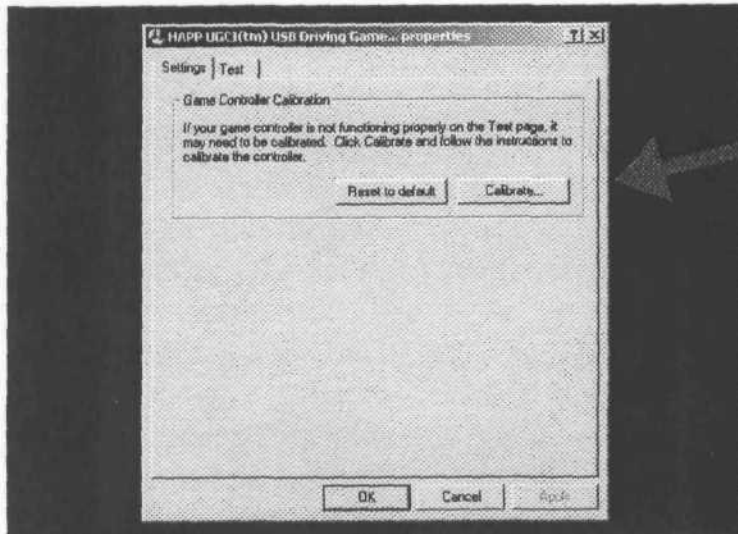


X :NOT IN use

To verify the buttons :

Button 1 = Booster
Button 2 = Flip
Button 3 = Cooler
Button 4 = View

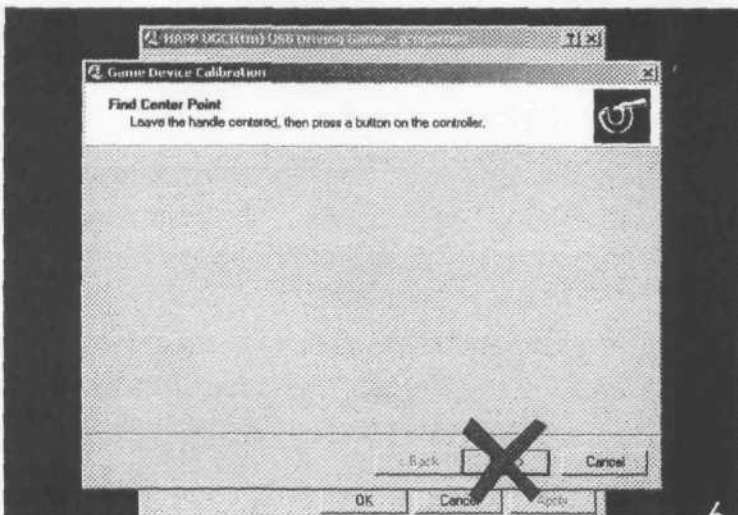
Click: Settings



Click:
Calibrate

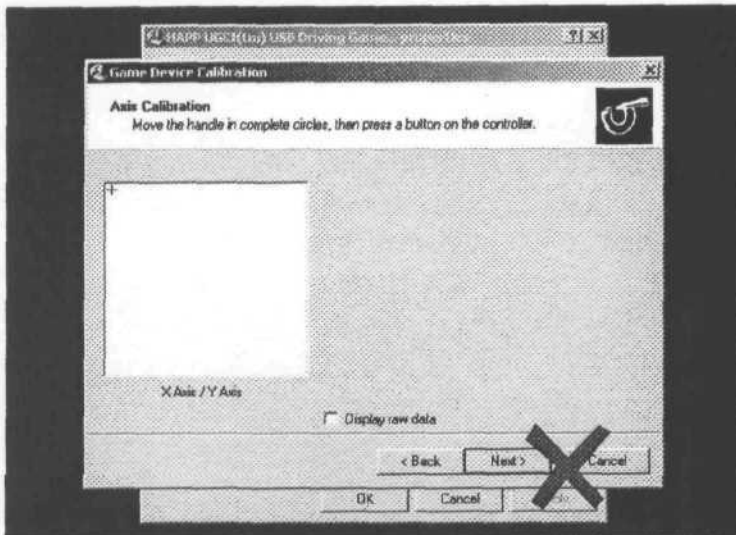


Click:
Next

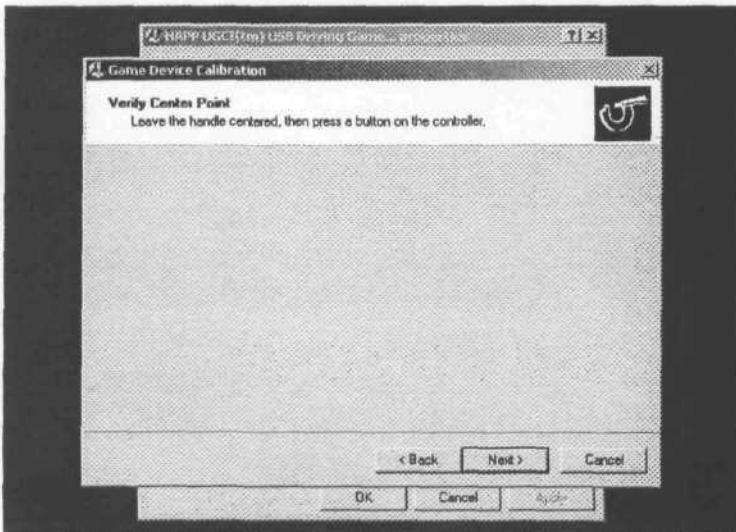


Important :

You must position the throttle in the middle, between Fast and Slow and make sure the steering is centered.
Do not click NEXT
Press on the booster button.

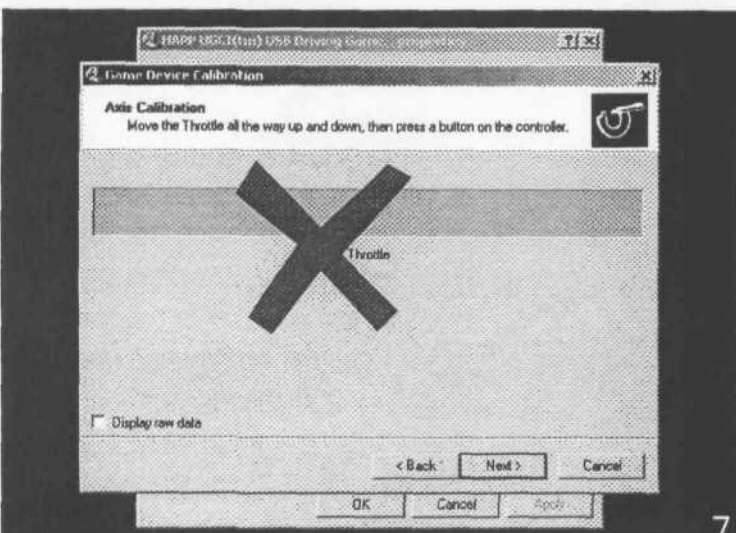


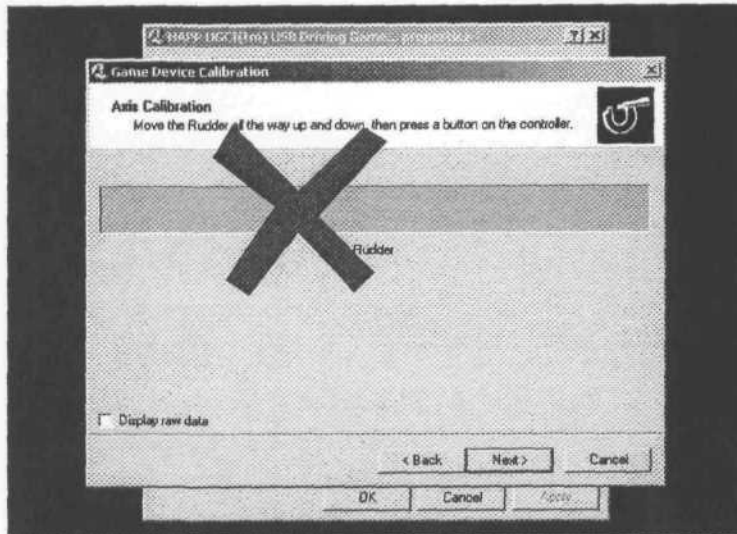
To calibrate turn the wheel all the way to the left and then all the way right at least 3 times then move the throttle up and down at least 3 times. Do not click NEXT, press on the booster button.



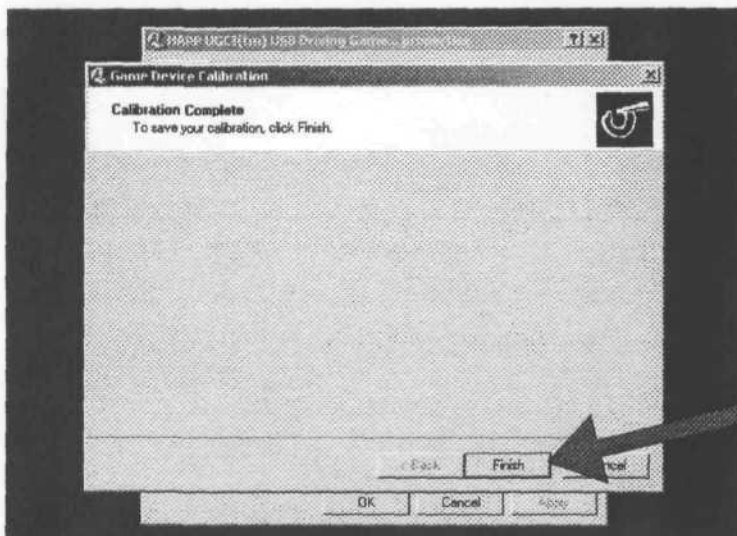
Important :

Position the throttle in the middle, between Fast and Slow and make sure the steering is centered. Do not click NEXT Press on the booster button.

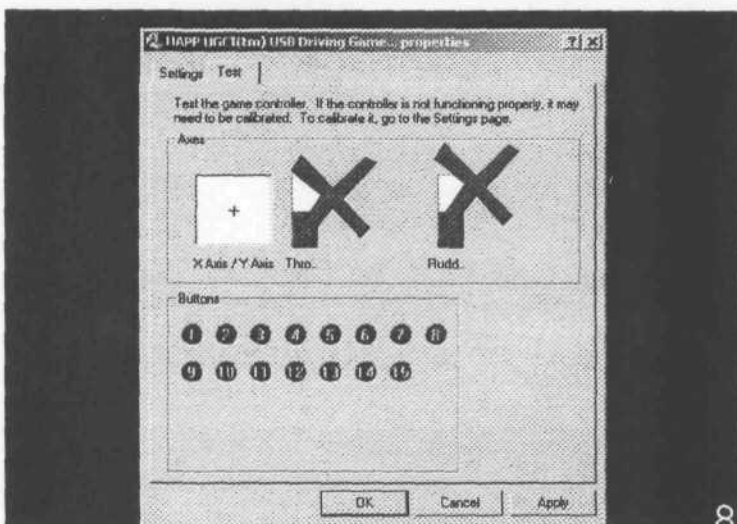





Do not respond to this screen
Do not click NEXT, press on
the booster button.



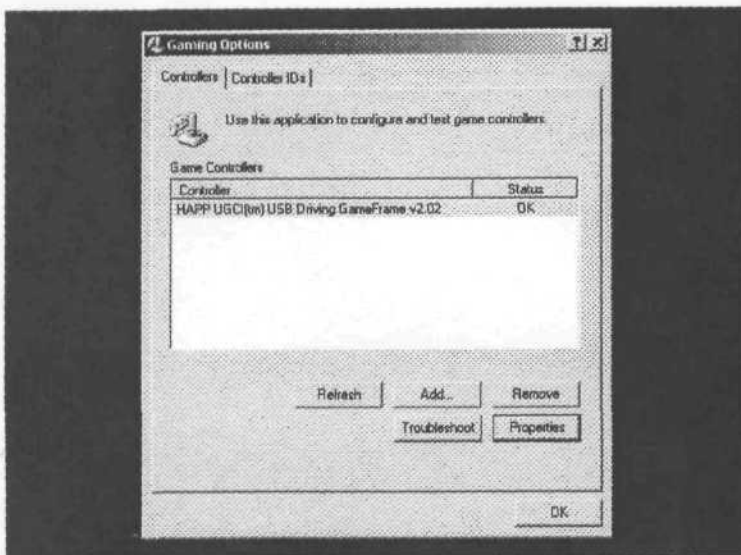
Click : Finish



Test to verify the calibration.
Horizontal movement for the wheel
and vertical movement for the
throttle.

 Not in use

Click : OK



Click : OK

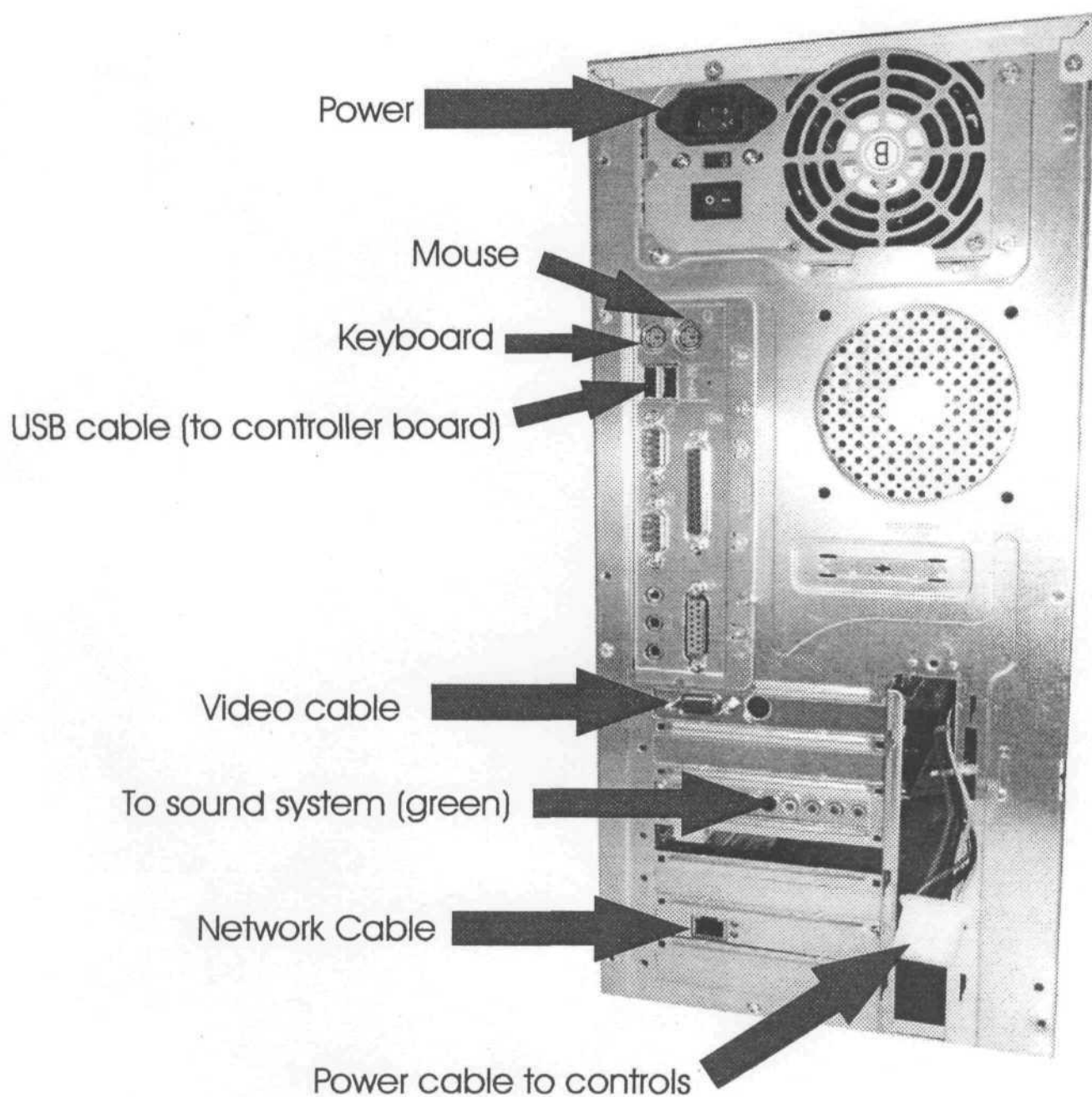
INSTRUCTIONS TO INSTALL A NEW HARD DRIVE



FOLLOW THESE IMPORTANT STEP

- 1 -** Replace the hard drive and start the machine
- 2 -** once the game is loaded press on the coin meter switch
(it is the small switch located inside the coin mech door)
- 3 -** Press W (this will quit the game)
- 4 -** Restart the machine

CONNECTIONS TO COMPUTER



SOUND AMP.



If you don't have sound check

- Is the power in on
- check all the connections
- check the fuse

Note : the 2 wires going to the base shaker are located behind the amp.

